

# RAMANI GV360



*A collection of detailed ground-level imagery taken with the XCAM G camera mounted on a moving vehicle*



## True 360° view

- 3D spherical view of the ground
- Full perspective from multiple camera angles
- Augmented reality mode



## Detailed View

- Clear vision of small objects
- Low, medium, and high-resolution image view
- Close visibility of objects up to 100m
- Rich complement to aerial imagery and maps



## Drive Through

- Navigate faster and easily in 'Drive Mode'
- Coverage of most Kenyan roads
- Keyboard control for quick motion
- Drive in forward or reverse



## Accurate Measurement

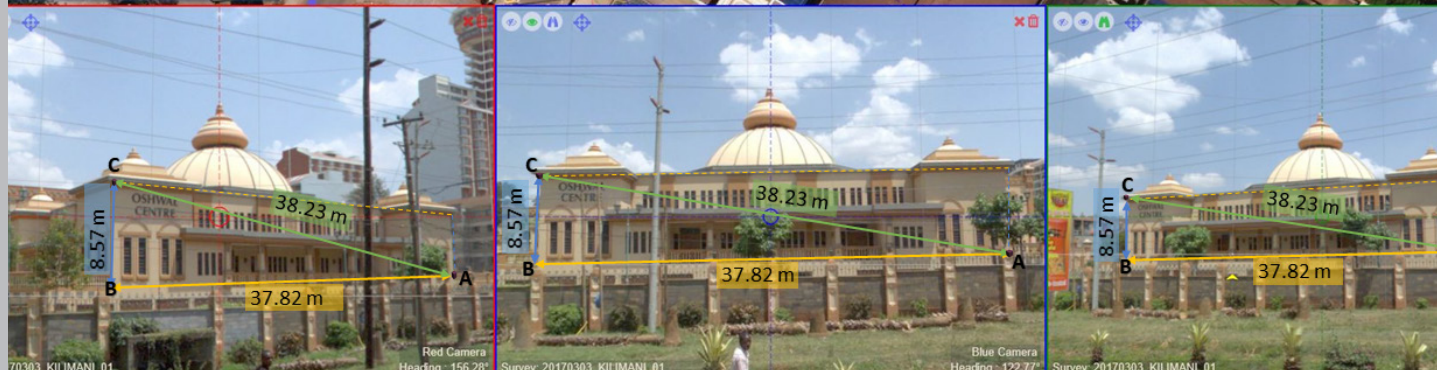
- Measure height, length, areas, and volumes
- Measure exact object position and orientation
- Improved precision with multiple camera views



## Create and Edit

- Import and visualize geotagged features
- Synchronised edits in Map and 3D views
- Accurate mapping of objects aided by 3D views

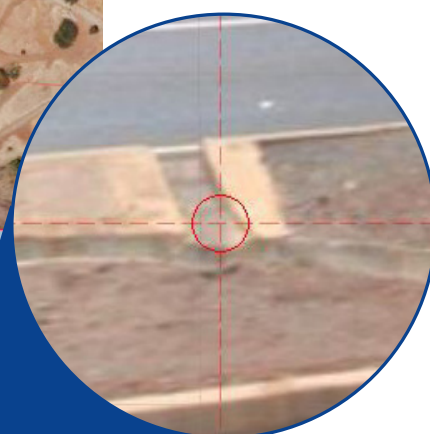
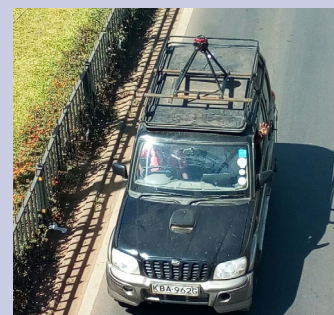




Accurate measurements of objects in 3D view

On demand GV360 survey:

- Private GV360 image collection for your project
- Single passage for specific or private area
- Regular surveys for work supervision or maintenance
- Upload your custom geotagged images



Add value to your maps with a detailed view of ground objects in the enhanced 3D Viewers