

RAMANI LAND SERVICES



Terrestrial survey solutions delivered on time and with precision



High-end Equipment

- High accuracy equipment
- Industry-leader processing software
- Current equipment calibration certificates



Qualified Personnel

- Highly qualified & skilled technical team
- Membership of professional bodies
- Relevant Industry training



Professional Experience

- Experience working in Eastern Africa
- Ability to work in tough conditions
- Capacity to handle large-scale projects
- Delivery of complex projects on time and to specification



Health, Safety, and Environment

- Operational HSE policy
- Team trained on HSE
- Site handling compliant with HSE requirements

Your preferred Land Survey Partner

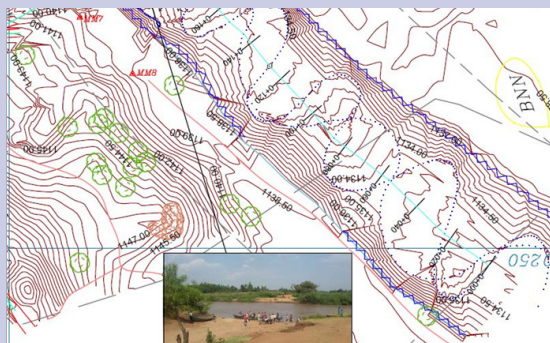




An integrated team of qualified and trained personnel that delivers against all odds



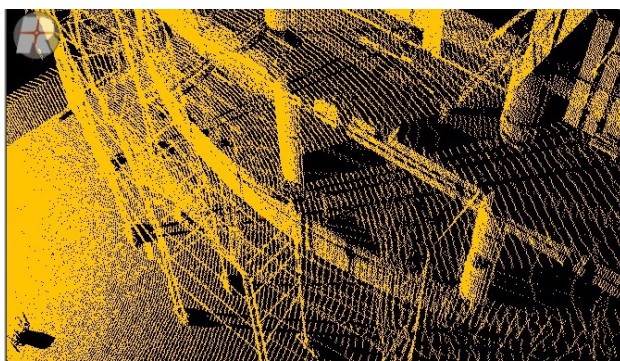
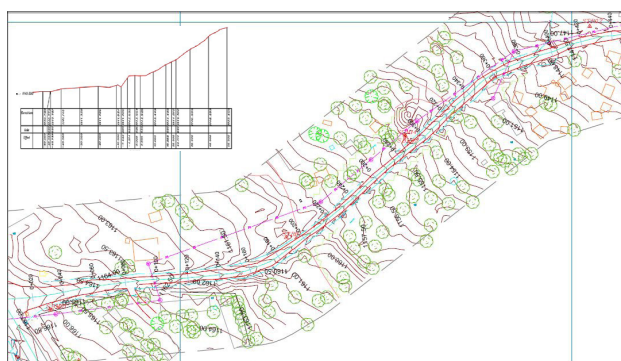
- Topographical Surveys
- Cadastral Survey
- Bathymetric Survey
- Terrestrial Laser Survey
- Underground Utility Survey
- Measured Building Survey
- Deformation Surveys
- Site Engineering Surveys



Ramani Pledge

At Ramani, precision and efficiency matter to us. We invest in technology that enables us to deliver quality surveys on time, every time!

Products



Tech Corner

Survey Equipment

- </> Leica Viva Dual frequency
- </> High-Target Dual Frequency
- </> Total Stations
- </> Reigl Terrestrial Laser Scanner

Software

- </> Leica Geo Office
- </> Topcon Survey Master
- </> Riegl RiScan Pro
- </> TerraScan
- </> TerraMatch
- </> TerraModeler
- </> TerraPhoto Viewer